



VALUELINE[®]
Curating Luxurious Lifestyles

Hyderabad | New Delhi | Bengaluru | Chennai | Vizag | Vijayawada

www.valueline.in

Contents.

03.

About Us

08.

Our Mission & Vision

09.

What We Do?

10.

Why Valueline?

11.

Product Preview

69.

Clients

70.

Prestigious Projects

77.

Valueline Showrooms

79.

Contact

About **VALUELINE!**

The epitome of international luxury!

.....

Elevate your lifestyle with Valueline. Since 2002, we specialize in luxury products spanning Sanitary Ware, Bath Fittings, Wellness Products, Modular Kitchens and Wardrobes, Tiles and Wooden Flooring, and Aluminium Windows and Doors. With a commitment to excellence, we bring world-class brands to India, contributing to iconic projects with our exclusive range and customer-centric approach. Experience luxury redefined, with you at the center of everything we do.





INDIA'S PREMIER LUXURY BATHROOM CURATORS

Step into the world of luxury with Valueline, India's premier destination for exquisite bathroom solutions. For over two decades, Valueline has proudly held the mantle of being the pioneer of luxury bathrooms in India, curating an unparalleled selection of global top-tier brands all under one roof.



GLOBAL PRODUCTS THAT ARE INDIA-READY!

Valueline brings to you exquisite luxury brands renowned globally for their impeccable quality. Our products, carefully curated from around the world, are tailored to suit the discerning tastes of the Indian consumer.



AN UNMATCHED EXPERIENCE

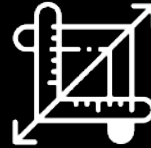
At Valueline, we understand that luxury is not just about aesthetics but also about the seamless integration of quality, functionality, and sophistication. With our extensive portfolio boasting over 50 esteemed brands, we offer a diverse range of premium products and accessories to curate an unparalleled experience for you!

THE VALUELINE ADVANTAGE

With over 2 decades of experience and the widest range of products in India, Valueline is the partner of choice for leading architects, designers, builders, corporates and discerning customers.



20+ years of excellence
since 2002



3 lakh +
Installations



Dedicated customer care department
for life-long contentment

THE COMPANY'S SOUL

In today's world of imperfections, the distinction comes with reading the environment and strategizing to align the necessary resources. Our business is all about detail, understanding our clientele, and catering to their specific requirements; surpassing all traditional approaches while creating, not just adopting, a precise modus operandi that gratifies our celebrated segment of clientele. At Valueline, our accomplishments over the years are a result of the phenomenal work and commitment of our team. The graph of our growth stands as a testimony to our relentless dedication and passion to revolutionize the industry and its practices. We have focused on offering products & services with unparalleled quality & efficiency to our clientele by setting goals and targets for everyone in the organization. Over the past years, we have realized the importance of ensuring complete single window services to our clients and have strived towards building the same.

It is an honour to build an institution that is the epitome of trust and relationships.



Mr. Narinder Anand
(Founder & MD)
Valueline Group



HEADQUARTER

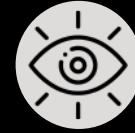
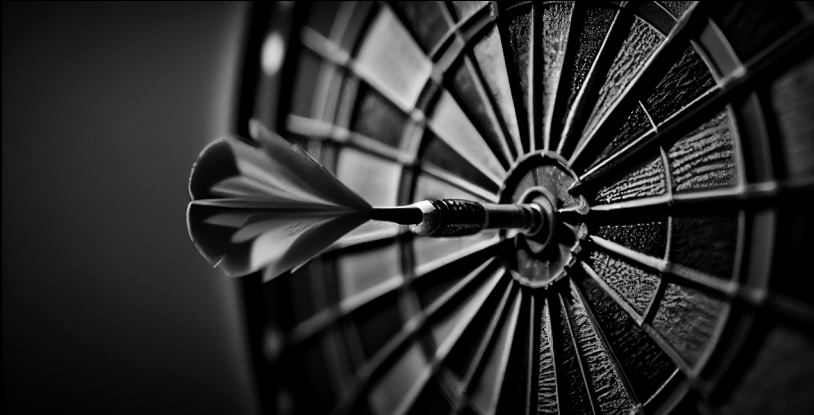
- 40,00 sft of product display
- 200+ dedicated employees
- 100,000 sft of retail product display across branches

OUR MISSION & VISION



MISSION

Improving the health & lifestyle of our clients by providing wellness focused home solutions



VISION

To become a global purveyor of consumer centric home solutions



WHAT WE DO?



Before



After

We Bring Luxury to your Home



WHY VALUELINE

CUSTOMER CENTRIC COMPANY

As the undisputed industry leader, Valueline has set the standard for excellence in both product offerings and customer service. Our dedicated customer care department ensures that every client receives personalized attention and assistance, guiding them through every step of the journey, from selection to installation.

PRODUCT CATEGORIES

SANITARYWARE	12
Basins Bathtubs WCs Bidet Sinks	
BATH FITTINGS	18
Faucets Basin Mixers Shower Heads Diverters Tub Fillers	
WELLNESS	25
Whirlpool Bathtubs Steam Generators Spa Hammams	
FURNITURE	28
Kitchens Wardrobes Fixed Furniture Appliances Countertops Loose Furniture Vanity	
SURFACE SOLUTIONS	37
Tiles Wooden Flooring Wall panels Wall Papers Sintered Stone Surfaces Glass & Metal Mosaics	
FENESTRATION SOLUTIONS	43
Aluminium Doors & Windows Facade systems Skylights & Pergolas	
INTERNAL PARTITIONS	55
Shower Cubicles Room partitions	
ACCESSORIES & ESSENTIALS	58
Bathroom Accessories & Essentials Heating & Ventilation systems Storage solutions	

SANITARYWARE

Basins | Bathtubs | WCs | Bidet | Sinks





TOTO®

Japan

"Explore the fusion of luxury and innovation"



"Fresh, ambitious and innovative design for the bathroom areas united by a spirit of innovation and care for any detail"



cielo
Italy

"Beyond all bounds, taking ceramic as far as it can go, telling its stories and evoking the emotional impact of color."



antoniolupi

Italy

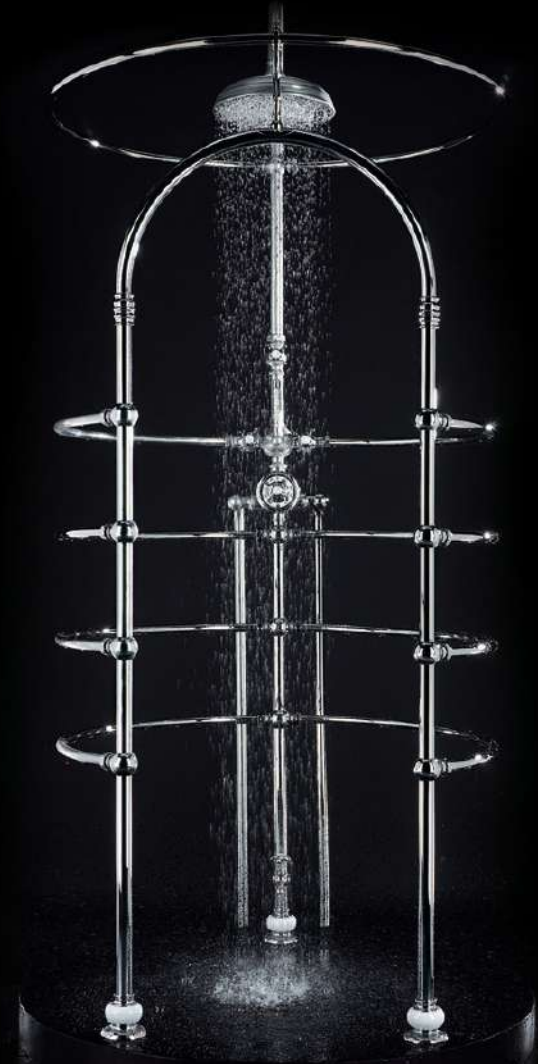
"Antoniolupi takes the natural stone's enduring strength to create limitless and timeless combinations in the bathroom."



BATH FITTINGS

Faucets | Basin Mixers | Shower Heads | Diverters |
Tub Fillers





DORN
BRACHT

Germany











WELLNESS

Whirlpool Bathtubs | Steam Generators | Spa | Hammams





United States of America





FURNITURE

Kitchens | Wardrobes | Fixed Furniture | Appliances | Countertops |
Loose Furniture | Vanity



PIANCA

Italy



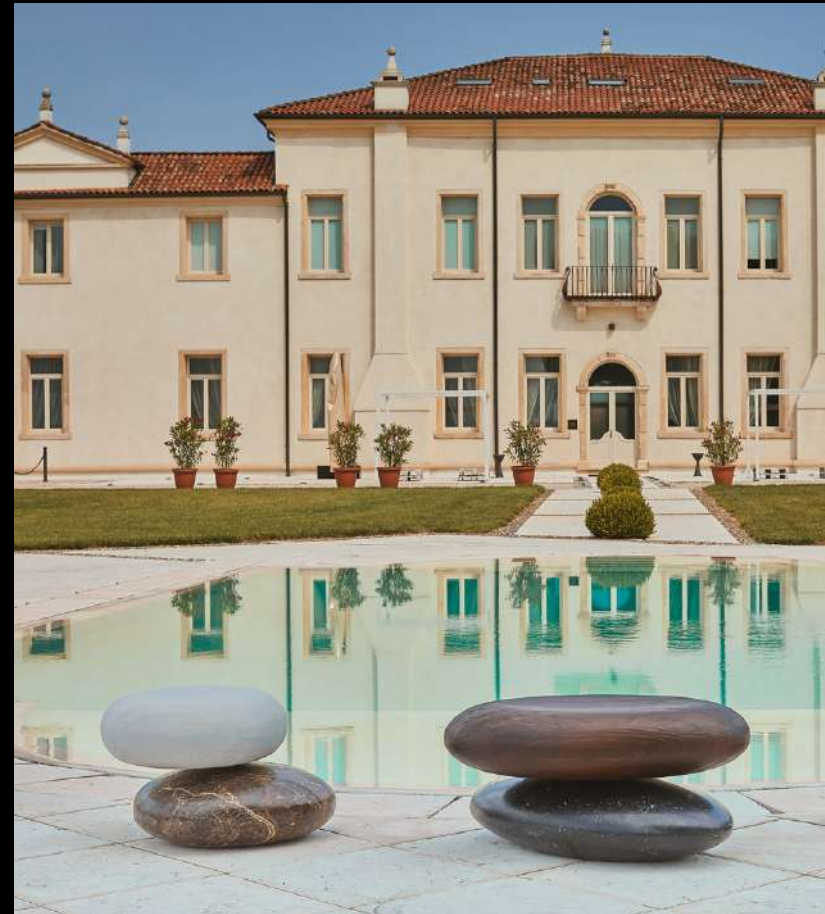


Panasonic

Japan











millou

Italy



SURFACE SOLUTIONS

Tiles | Wooden Flooring | Wall panels | Wall Papers | Sintered Stone Surfaces |
Glass & Metal Mosaics







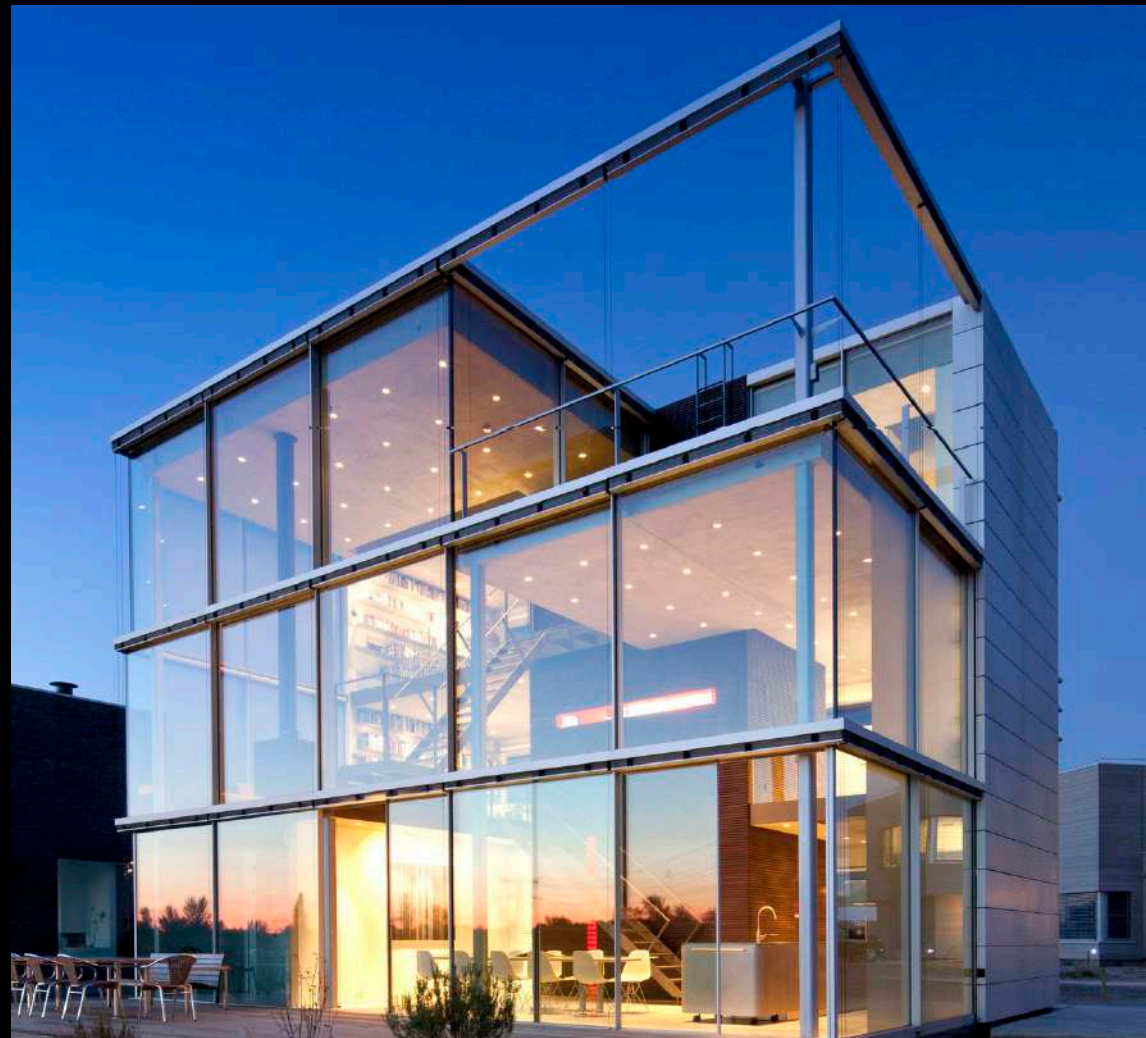






FENESTRATION SOLUTIONS

Aluminium Doors & Windows | Facade systems | Skylights & Pergolas







FABRICATION UNIT

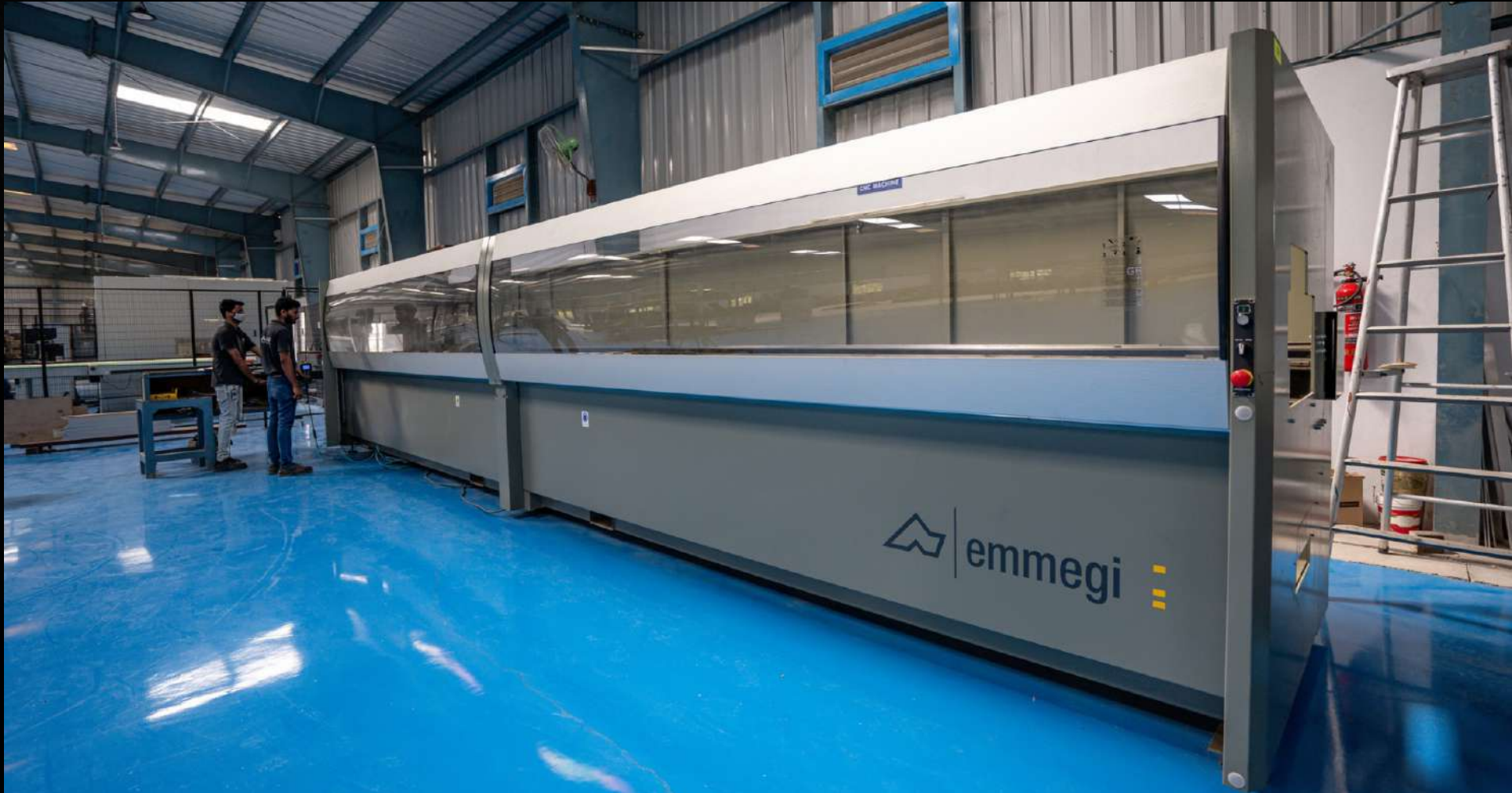
- Production capacity : 10,000 sft





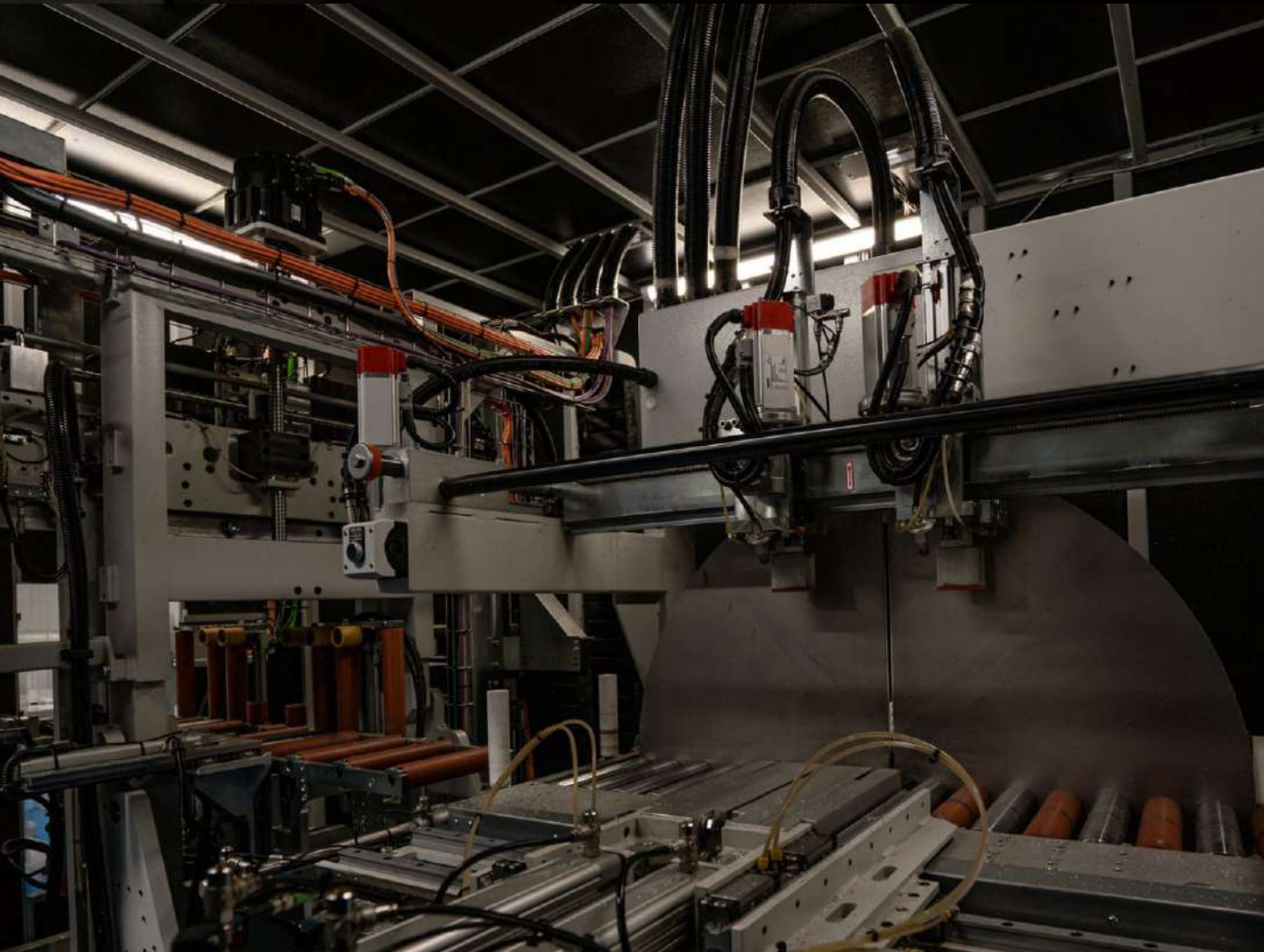
- 3 separate cutting lines.
- Multi axis
- Top of the line machines from Italy

- Fully automated dual station 6 axis CNC machine for fast operation and mass production





- LMT-65 fully automatic machine
- Cutting, milling, CNC, notching all operations in one single machine.
- No manpower required to operate.
- 24m long machining stations



- Internal view of LMT-65.
- Automated CNC station
- BAR code printing



- Loading station
- Can machine upto 7m long profiles



- Fully customized punching machines station



- Highly trained workers
- QC checks
- Skilled manpower



- High capacity in house hardware storage



INTERNAL PARTITIONS

Shower Cubicles | Room partitions





MOZART



ACCESSORIES & ESSENTIALS

Bathroom Accessories & Essentials | Heating & Ventilation systems | Storage solutions







antoniolupi

Italy



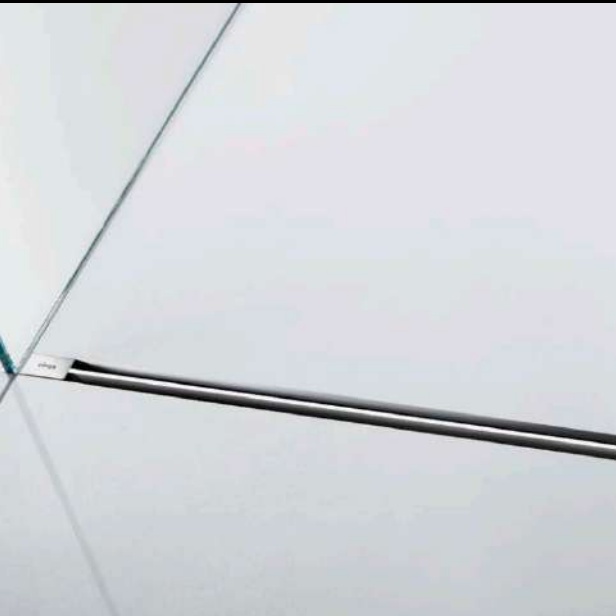




viega

Germany

“Sustainability at it's best in Viega”



Turkey





“Good reasons to enjoy your home comforts”



Germany





CLIENTS

.....

Novelty products & inimitable customer service has carved a niche for VALUELINE, with continued patronage from Celebrities, Hotels, Airports, Corporate companies, businessmen, resorts & IT Parks. Some of the recognized names of VALUELINE clientele include →

SOME OF OUR PRESTIGIOUS PROJECTS

HOTELS



Conrad Hotels (Maldives)



Taj Falaknuma (Hyderabad)



Four Seasons (Bangalore)



Fortune Select Grand(Chennai)



Novotel (Hyderabad)



ITC Kakatiya (Hyderabad)



Park Hyatt (Hyderabad)



Avasa (Hyderabad)



Sheraton Bogota
(Colombia)

RESIDENTIAL



Sri Sreenivasa Fortune One
(Hyderabad)



Fortune Sonthalia Sky Villas
(Hyderabad)



Gvk Sky City
(Hyderabad)



DSR The First
(Hyderabad)



Jayabheri Peak
(Hyderabad)



My Home Bhooja
(Hyderabad)



Sri Sreenivasa Esmeralda
Fortune (Hyderabad)



My Home Abhra
(Hyderabad)



Fortune Prime
(Hyderabad)



Land Mark Vertica
(Chennai)



Vessella meadows
(Hyderabad)



Jayabheri Temple Tree
(Hyderabad)



Hallmark Palm Breeze Villas (Hyderabad)



VPR Shantiniketan Villas
(Nellore)



Parc Ville
(Tadepalli, Vijayawada)



Oyster - Bhoomi Buildings
(Chennai)



Amara Arya
(Chennai)



Hallmark Palm Breeze Villas
(Hyderabad)

CORPORATE

.....



Hyundai Corporate Office (Hyderabad)



Novartis Corporate Office (Hyderabad)



Microsoft Corporate Office (Hyderabad)



Venenburg IT Park (Hyderabad)



TCS Hitech City Campus (Hyderabad)



Dr. Reddy's Corporate Office (Vizag)

AIRPORTS

.....



Rajiv Gandhi International Airport (Hyderabad)



Delhi International Airport (Delhi)



Visakhapatnam International Airports
(Visakhapatnam)

HOSPITALS



Continental Hospital (Hyderabad)



Care Hospital (Hyderabad)



KIMS Hospital (Hyderabad)

SHOPPING MALLS & CINEMAS



AMB Cinemas (Hyderabad)



Rain Cinemas - Nellore (Andhra Pradesh)



GVK One Mall (Hyderabad)

VALUELINE SHOWROOMS



HYDERABAD

#8-2-293/82/A/706/1, Road.no.36, Jubilee Hills, Hyderabad - 500033, Telangana, India



NEW DELHI

Second floor, khasra no. 356-357, M.G. Road, Mehrauli, Sultanpur, South Delhi, New Delhi-110030



BANGALORE

Sri Krishna Square, #953, 12th Main Road, HAL 2nd Stage, Indira Nagar, Bangalore - 560038, Karnataka, India



CHENNAI

GKS Annexe, 20 Pycrofts Garden Road, Next to Sankara Nethralaya Annexe, Chennai - 600 006, Tamil Nadu, India



VIZAG

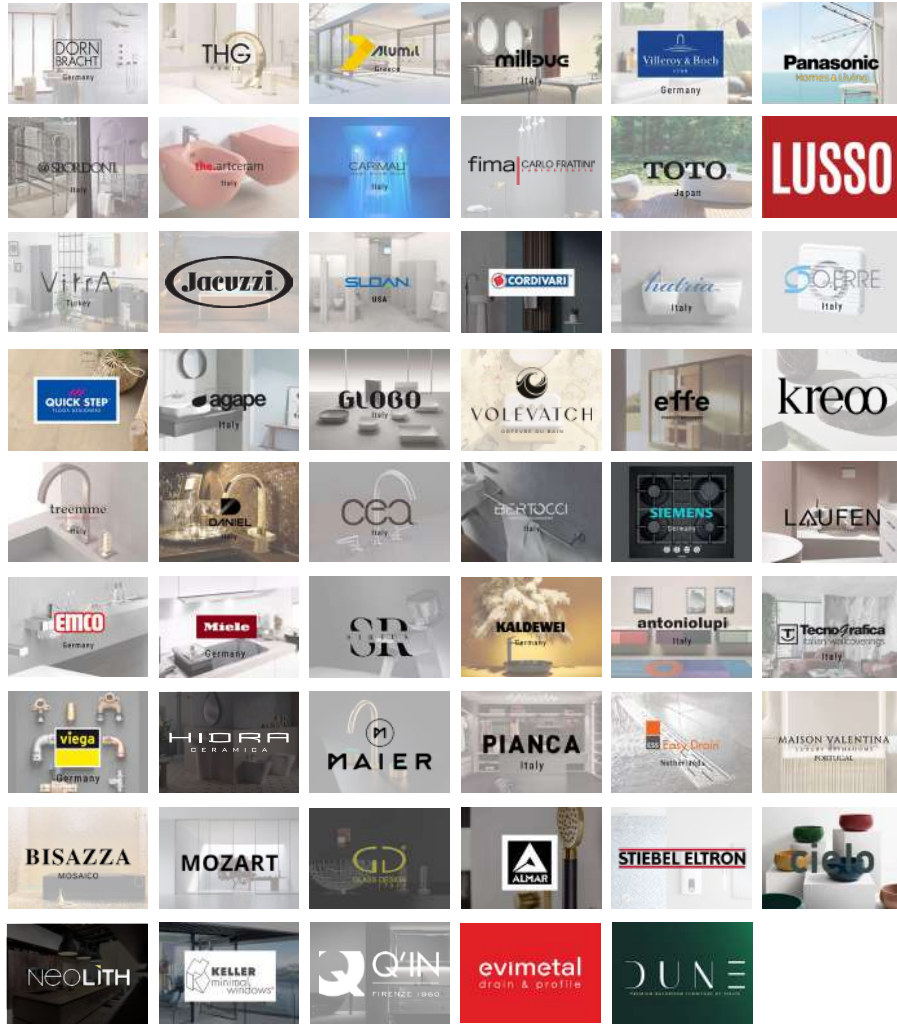
45-56-1/2, First Floor, Krishna Mohan Plaza, Narasimha Nagar NH5, Near Port Hospital, Visakhapatnam, AP-530024, India.



VIJAYAWADA

52-1/10-1/1a, Veterinary Colony, Service Road, Ratna Complex, gunadala, Vijayawada, Andhrapradesh - 520 008, India

BRANDS AT VALUELINE



Celebrating



Years



of

VALUELINE

**The most recognized global luxury brands make VALUELINE
their home in India.**

THE WORLD OF LUXURY IS HERE, DISCOVER THE BEST WITH US.

Visit
www.valueline.in

Customer Care
Call - +91 8008103089
Email - customercare@valueline.in

Business & Grievances – info@valueline.in

Sales
Call - +91 80081 03069
Email : sales@valueline.in

Hyderabad | New Delhi | Bengaluru | Chennai | Vijayawada | Vizag